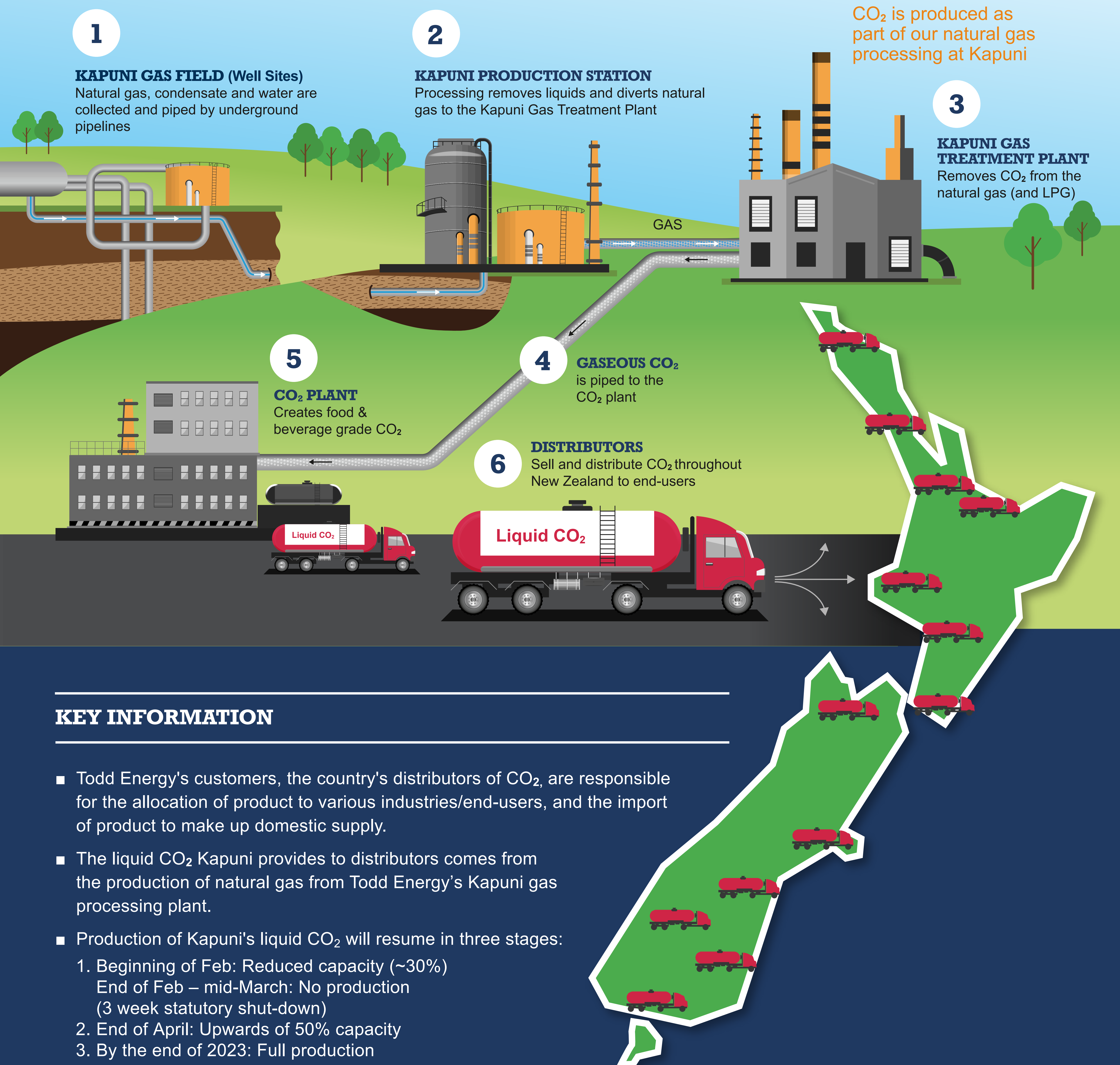


Kapuni gas & CO₂ production process



KEY INFORMATION

- Todd Energy's customers, the country's distributors of CO₂, are responsible for the allocation of product to various industries/end-users, and the import of product to make up domestic supply.
- The liquid CO₂ Kapuni provides to distributors comes from the production of natural gas from Todd Energy's Kapuni gas processing plant.
- Production of Kapuni's liquid CO₂ will resume in three stages:
 1. Beginning of Feb: Reduced capacity (~30%)
End of Feb – mid-March: No production (3 week statutory shut-down)
 2. End of April: Upwards of 50% capacity
 3. By the end of 2023: Full production