

FGC SAFE IN-
STORE PASS

WEBSITE GUIDE

PREPAID USER

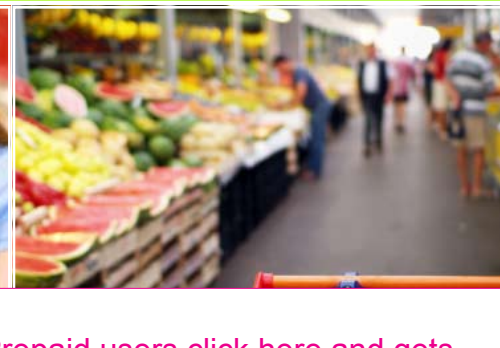


Home

About Us

Contact Us

creating a **safe** workplace for **employees**



Prepaid users click here and gets directed to the following page.

Welcome to Safe In-Store Pass

The FGC Safe In-Store Pass is an industry-designed online course aimed at improving the safety of supplier representatives working in a retail store. It is the result of a collaborative effort between Retailers and the NZ Food & Grocery Council to deliver time and cost effective training that is immediately accessible to all.

This course allows you – the representative - to understand your responsibilities whilst in store and enables all parties to work together to create a safe workplace.

Topics you will cover include:

- Goals of induction
- Common hazards
- Procedures on handling hazards
- How to act when an incident occurs

It will take you just one hour to complete the Safe In-Store Pass and as it is delivered totally online there is no travel time!

On completion of the course you will be issued with a temporary Certificate and then a permanent photo Identification Card.

Your support of this initiative is greatly appreciated.

Next Steps

You are now ready to begin - click on the Enter button to the right.

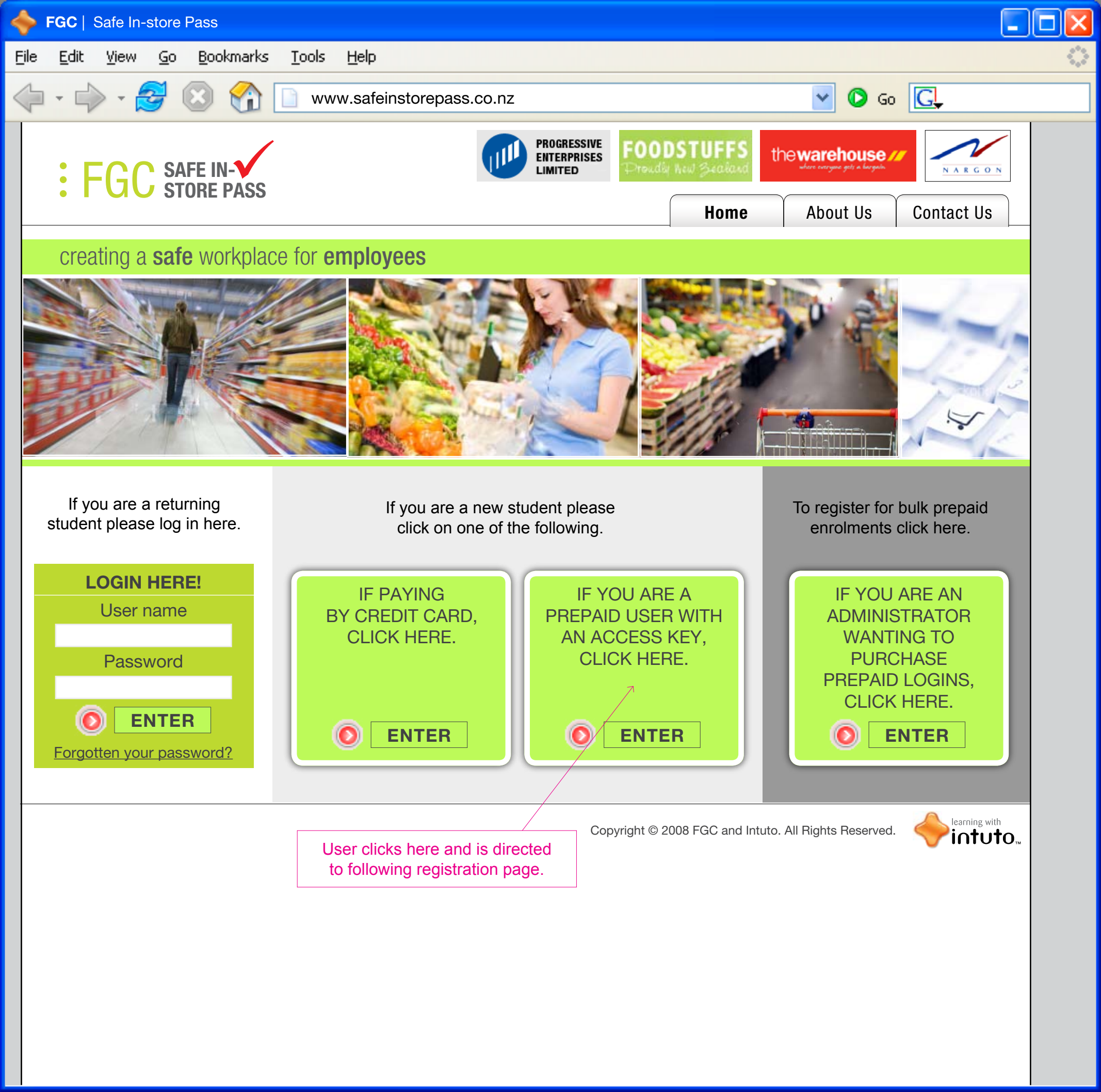


CLICK HERE TO START



ENTER

[Click here to view minimum system requirements for the computer you are using.](#)



creating a safe workplace for employees



If you are a returning student please log in here.

If you are a new student please click on one of the following.

To register for bulk prepaid enrolments click here.

LOGIN HERE!
User name
Password
ENTER
Forgotten your password?

IF PAYING BY CREDIT CARD, CLICK HERE.
ENTER

IF YOU ARE A PREPAID USER WITH AN ACCESS KEY, CLICK HERE.
ENTER

IF YOU ARE AN ADMINISTRATOR WANTING TO PURCHASE PREPAID LOGINS, CLICK HERE.
ENTER

User clicks here and is directed to following registration page.



Registration

Please fill in the following fields so we can process your order.

* These fields need to be filled in to ensure we provide you with the correct information.

Student ID: * (supplied by your Employer)
Access Key: *

First Name: *
Last Name: *
Email Address: *
Day Time Phone: *
After Hour Phone: *
Postal Address: * (for mailing your I.D. Card)
Suburb: *
City: *
Postal Code: *
Country: *

Agree to receive emails *

User is logged into ILS once complete.



You are logged in

- Home
- Online Payments
- Courses
- My Account
- Logout

All you need to get started is to upload a passport style photo for your ID card.

Your photo must be:

- in the style of a passport photo (see below for details)
- in jpg file format

Note: Unsuitable photos will be rejected, please ensure your photo meets the criteria described below.

Click here for instructions on creating a passport photo to upload

Select your photo to upload: **BROWSE**

SUBMIT

----- OR -----

UPLOAD YOUR PHOTO LATER

For help call our helpdesk on 0800 843 733 between 8:30 - 5:00pm on Monday to Friday.